

TRANSPORTATION SERVICES

PARKING GUIDANCE

T2 SYSTEMS EXECUTIVE FORUM



TEXAS A&M UNIVERSITY
Transportation Services

Debbie Hoffmann, Director

What we're covering today

- Texas A&M Transportation Services Statistics
- Parking Guidance at Texas A&M University
- Counting Technology
- Group Discussion





Texas A&M University

- Over 63k student enrollment
- Over 10k Faculty and Staff
- 5,200 Acres
- Total Revenue \$45 million

Parking Operations



- **Manage 35,225 Parking Spaces**
 - *6 garages*
 - *over 120 Parking Lots*
- **Parking Revenue \$28 million**
- **24 points of entry**

Parking Guidance at Texas A&M University



UB

VISITOR



GARAGE
AVAILABILITY

Central Campus

8888



University Center

8866



West Campus

8888



Cain

8888





VISITOR



Garage
Availability



↷ **CAIN 336**

Cain

↶ **CCG 42**

Central
Campus

↷ **UCG 222**

University
Center

↷ **WCG 332**

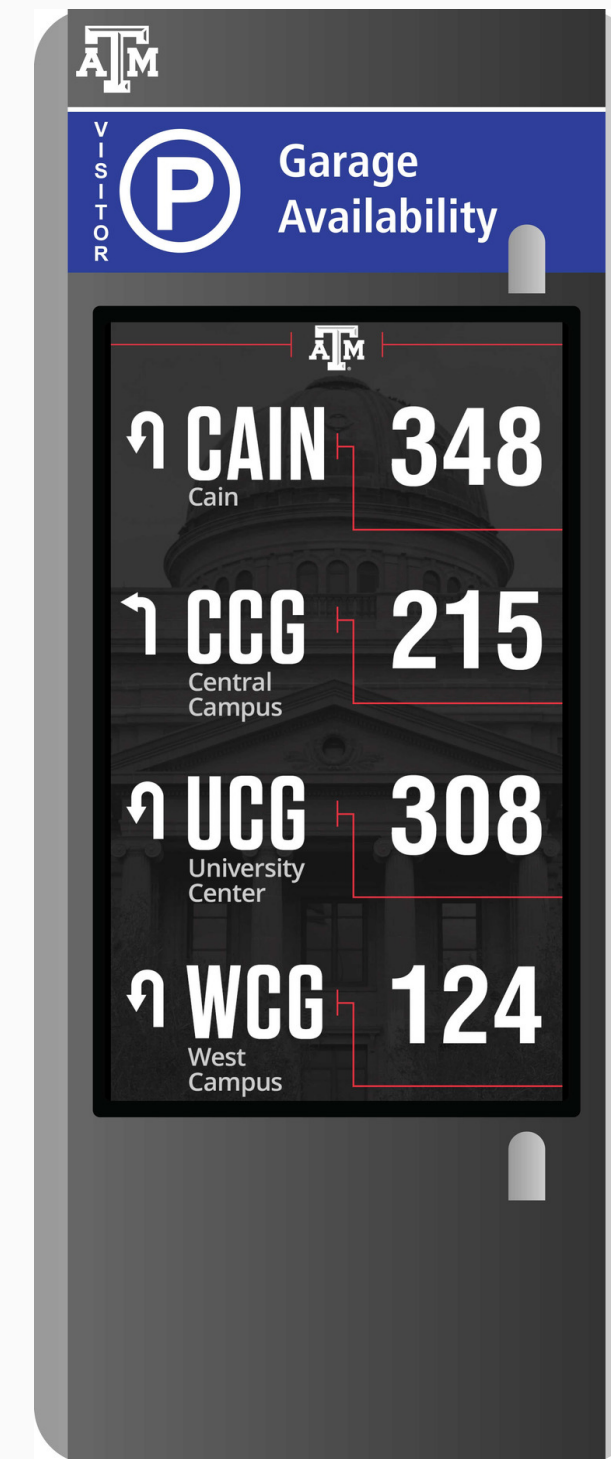
West
Campus

04:32:44 PM

Parking Operations



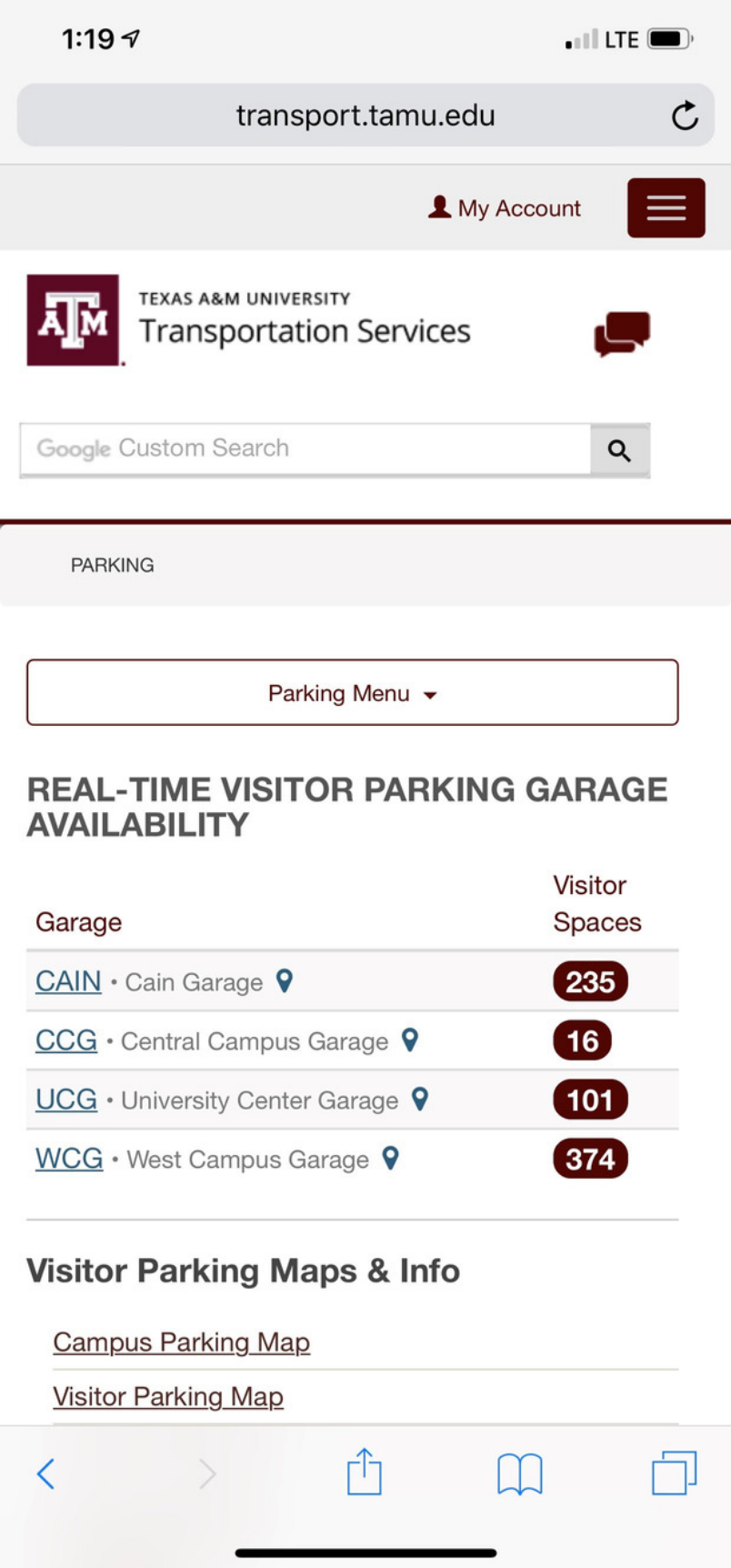
DAYTIME



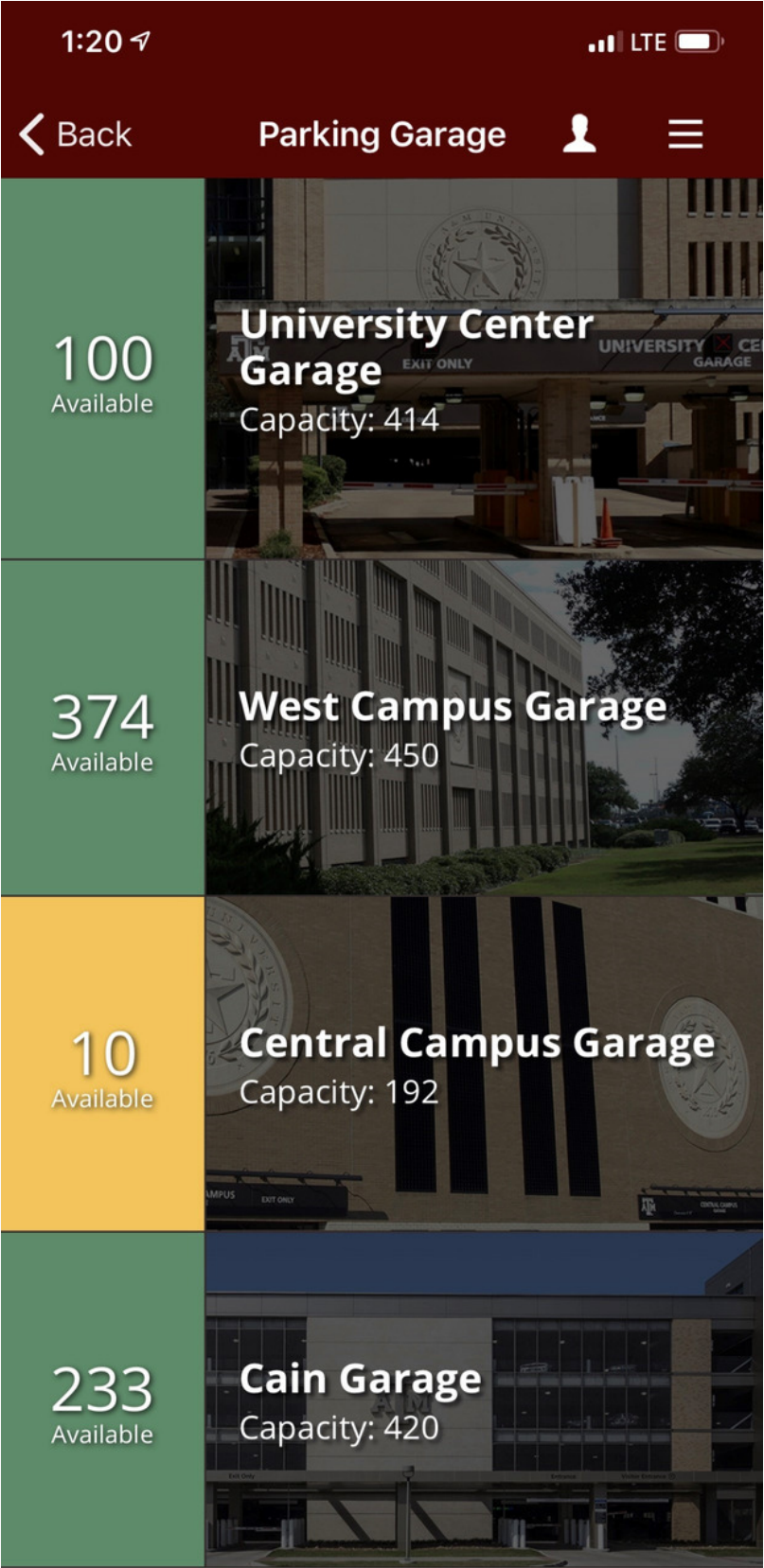
NIGHTTIME

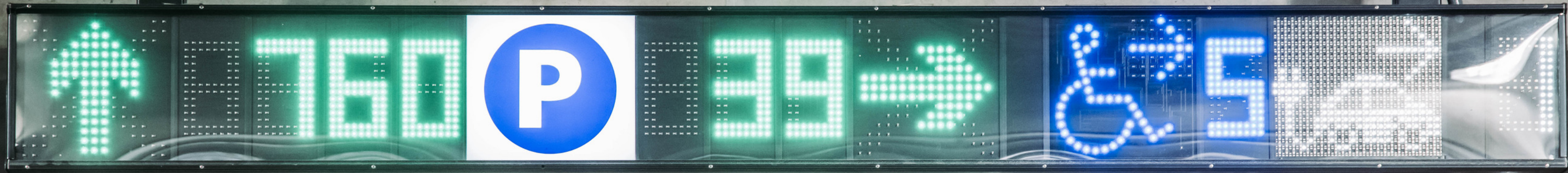
Counting Technology

WEBSITE



UNIVERSITY MOBILE APP







RESERVED
PARKING

↔

VAN
ACCESSIBLE

\$50 - \$200 FINE
WITHOUT VEHICLE
PERMIT

ROOF DRAIN

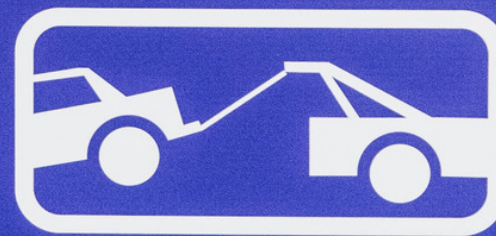




**PURPLE
LIGHTS**



**VALET
PARKING
ONLY**



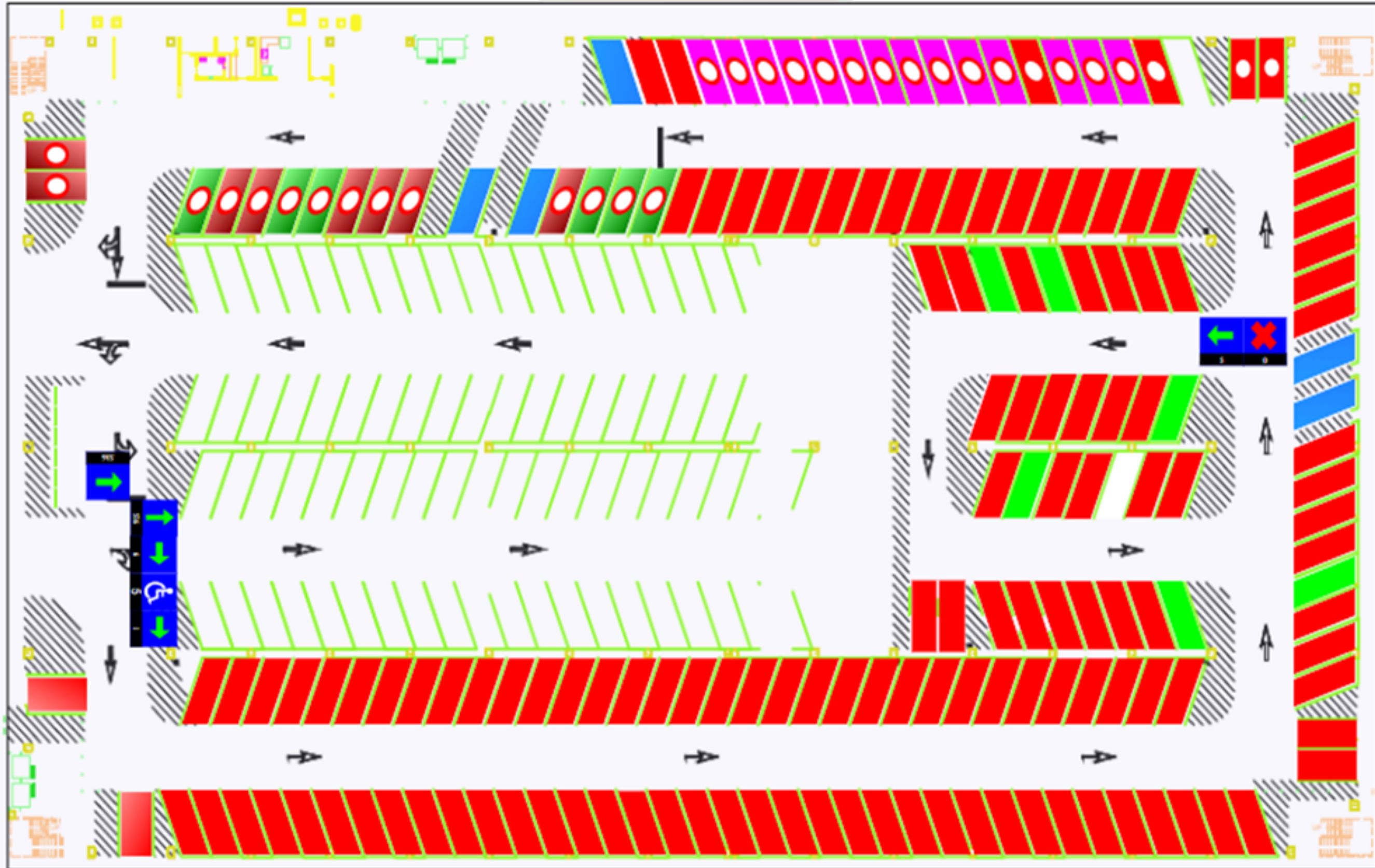
TOWING ENFORCED





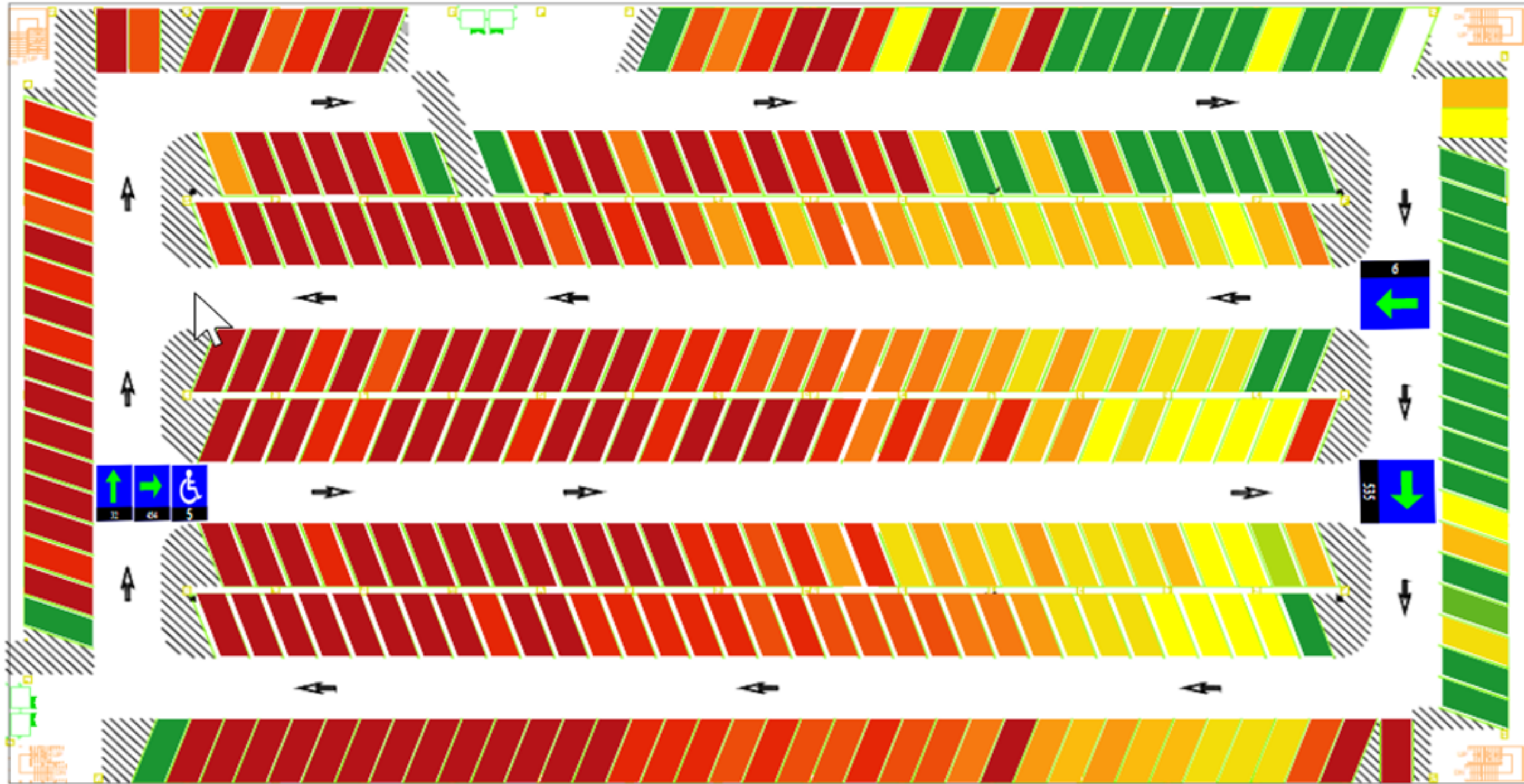
Level 1

96%



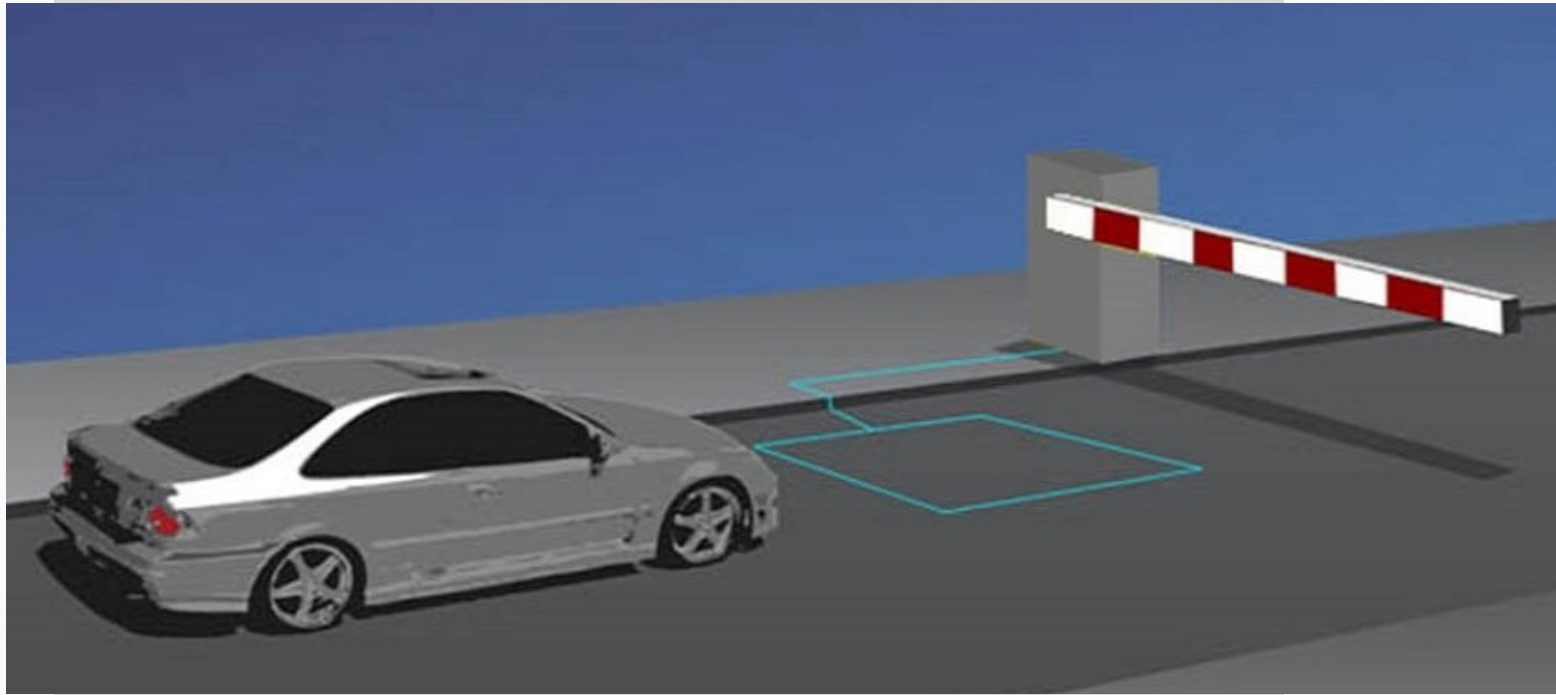
Level 3

Sensor Occupation Rate (0-100%)
From: 2019-02-11 08:51
To: 2019-02-11 10:51
OK Close



Counting Technology and a look at Texas A&M University

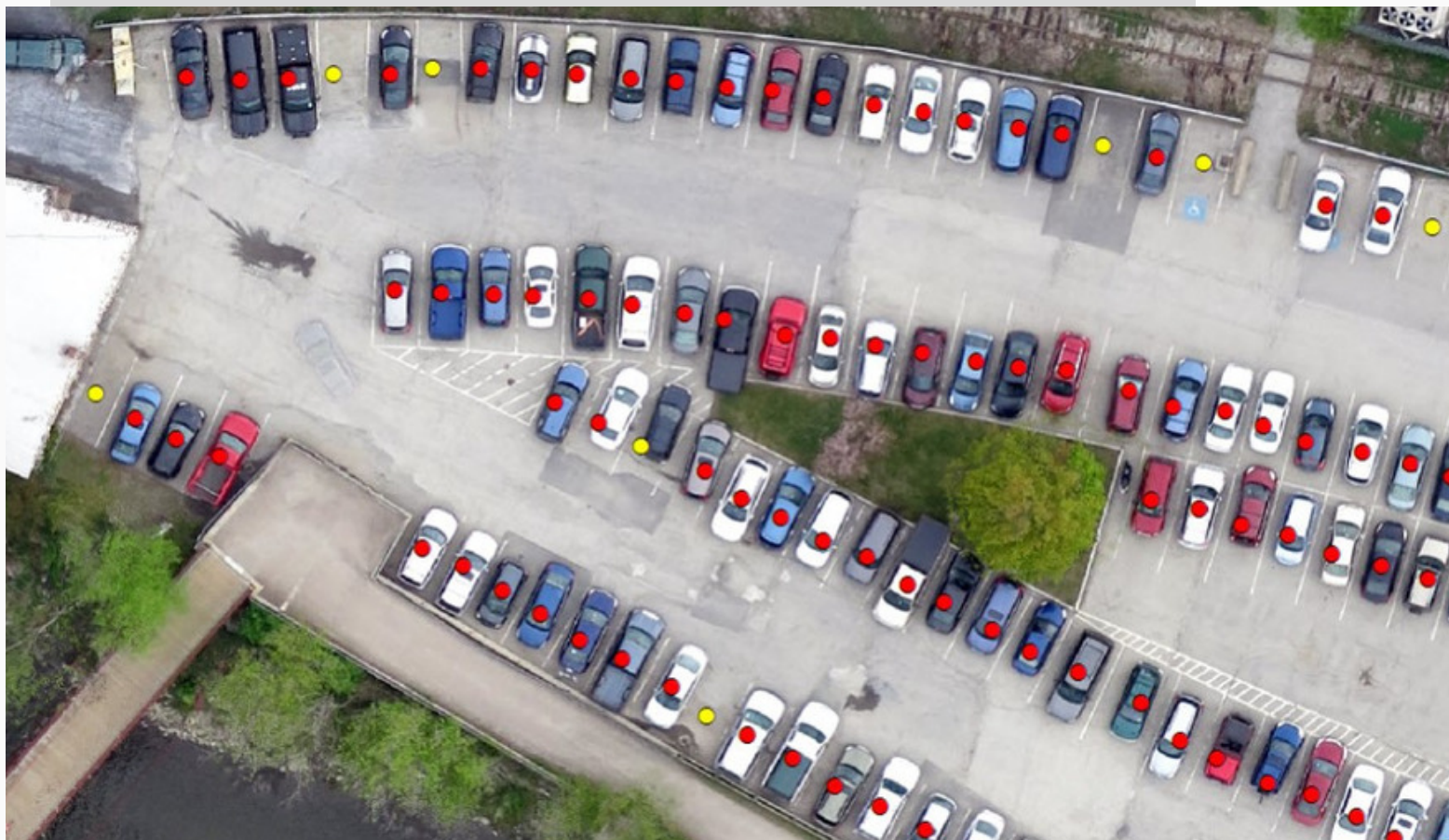
Lot Counting Technology



Loops – count consistently but accuracy is an issue; daily (usually) manual recounts are necessary to restore accuracy

Camera Technology – analyzes the image and provides counts

- Trees or other obstacles obscure some spaces
- Daylight/nighttime present challenges



Counting Technology



- **Pucks** – generally more accurate but also more expensive; use varying technologies
 - Magnetic
 - Ultrasonic
 - Infrared
 - Optical detectors



ID:00019E86

Model: SENSIT SURFACE MOUNT US
ART: 9958533

Made in the Netherlands
Parallelweg 2, NL-7141DC Croenlo
FCCID: CGDSENSITSM
IC: 1444A-SENSITSM

HD
08



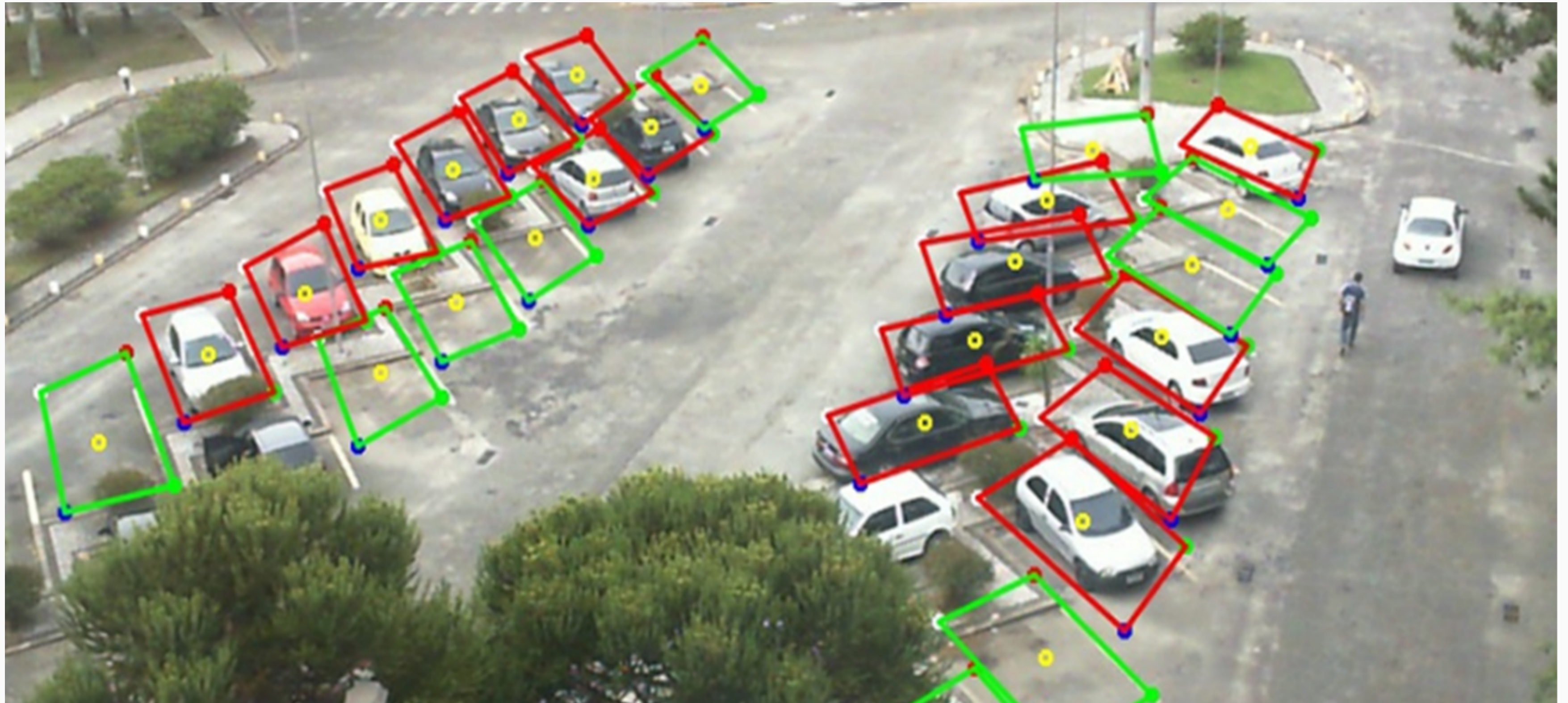


LEVEL 5









- Camera counting pilot

Let's Talk!

Have an installation and would like to tell us about it?

Considering a purchase and have a question for the group?

Hearing about something new on the horizon and want to share?

Contact Details

Debbie Hoffmann
dhoffmann@tamu.edu

transport.tamu.edu/presentations



TEXAS A&M UNIVERSITY
Transportation Services